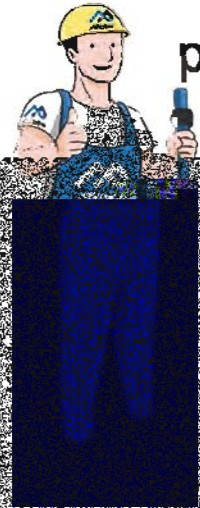
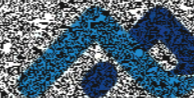
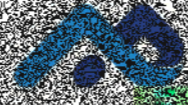
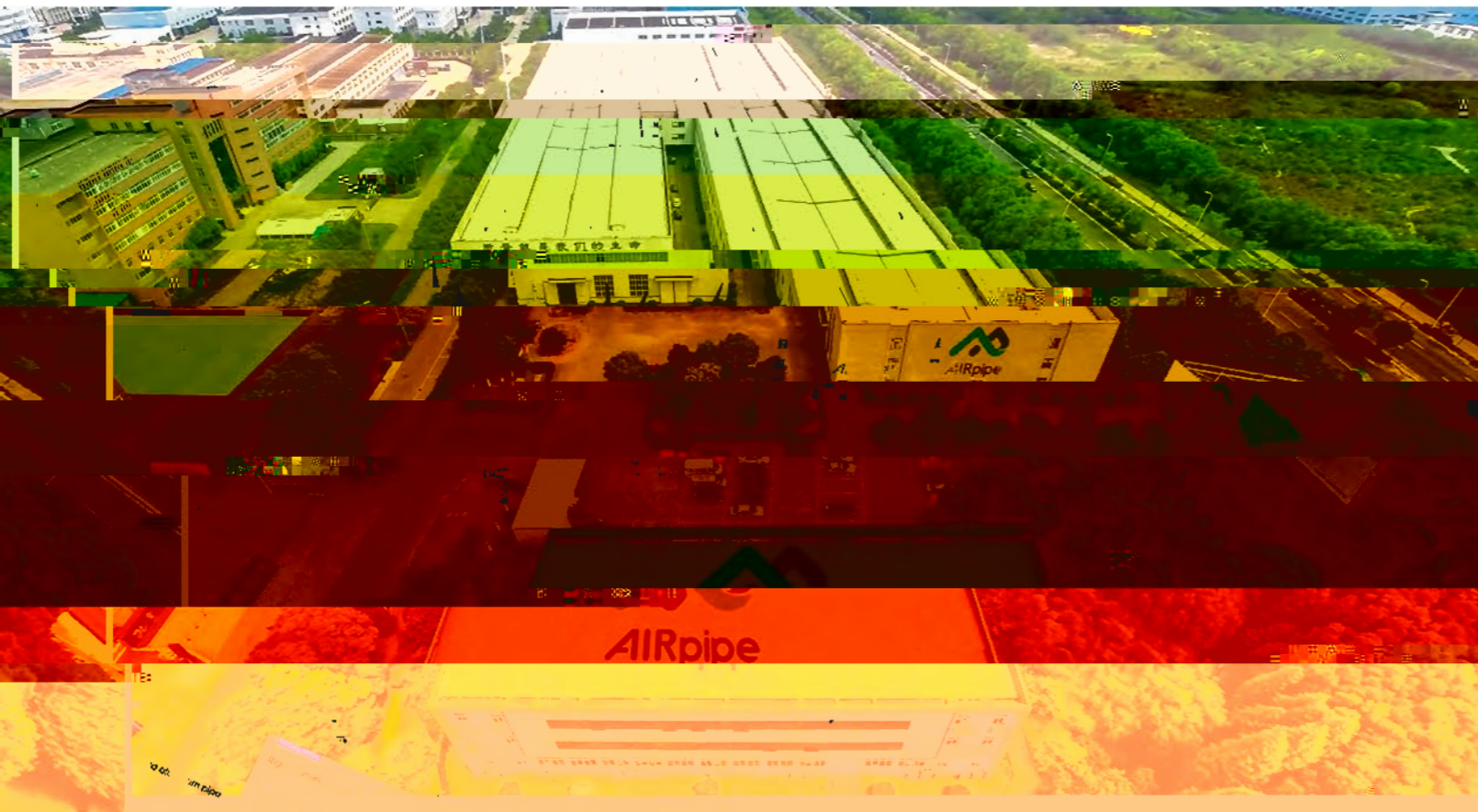


We provide superior performing compressed air & CO2 systems with



MANAGED TO SUPERIOR PERFORMANCE



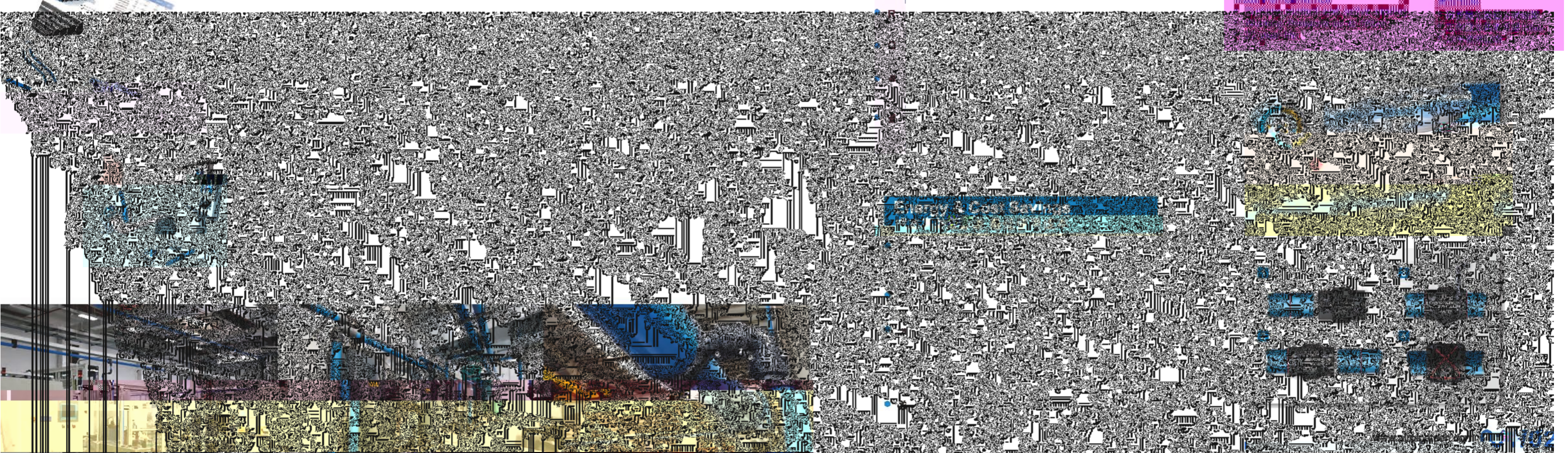


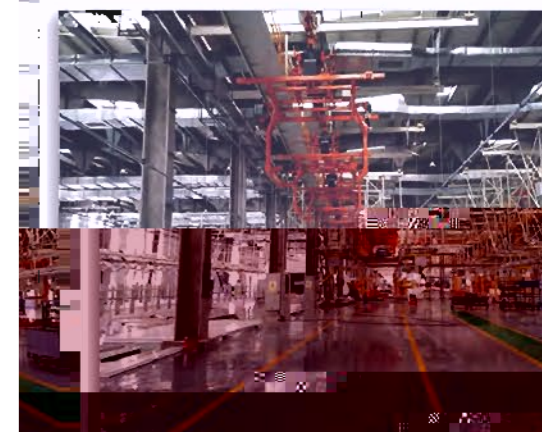
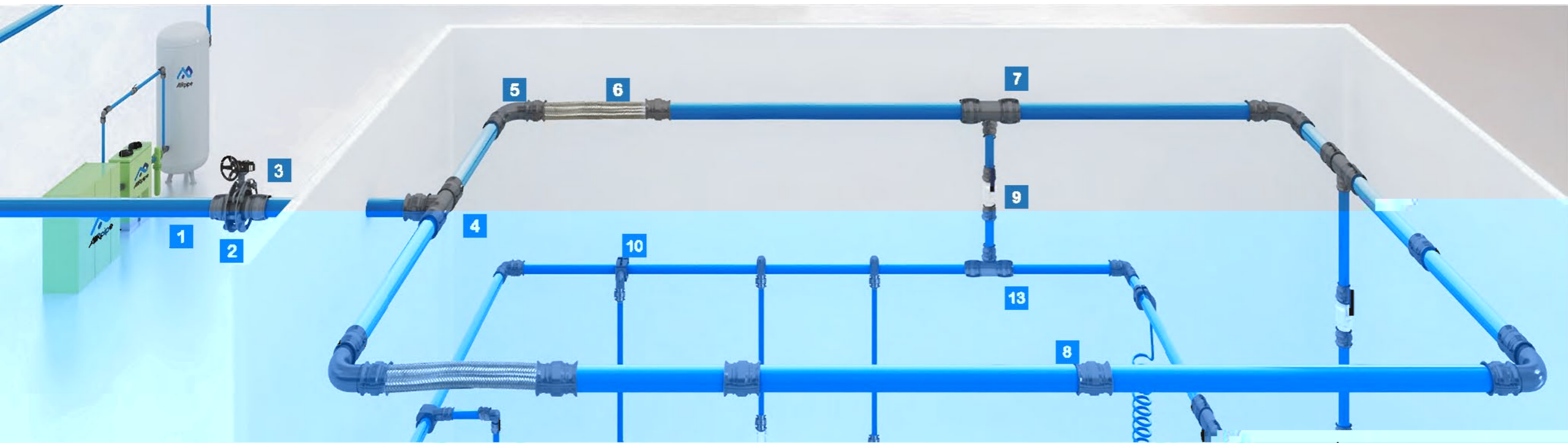
Superior Reliability & Longevity 最佳可靠性和使用年限

- Highly durable materials resistant to corrosion, vibration, thermal variation, and outdoor weather conditions.
- Metal clamshell connectors for all diameters are stronger and more durable versus polymer fittings.
- Unique grab ring design (20-50mm) and lugged ring (63-200mm) allows for zero risk of disconnection.
- Patented active concentric seals provide leak free performance, even in high vibration applications. Seal lifespan is double that of industry competitors.
- 耐腐蝕金屬材質與聚合物材質相比，强度高，壽命長，有效抵抗銹蝕，振動，熱脹冷縮及室外安裝的惡劣環境。
- 專利的抱箍式快插接頭技術，壽命是普通旋插式的一倍，並且更加穩定及抗衝擊。
- 專利設計的主動式壓力密封圈，耐壓更高，壽命更長，杜絕洩漏隱憂。

Quick & Easy Modular Installation 便捷的模組化安裝

- Complete range of pipe, fittings and accessories works easily for new projects renovations & extensions.
- R





- | | | | | | | | |
|----------------------------|--------|-----------------------------------|-------|--------------------------------|--------|---------------------------------------|----------|
| 1 Aluminum Pipe | 剛性鋁合金管 | 5 Aluminum 90 Degree Elbow | 90度彎頭 | 5 Quick Plug Ball Valve | 快速連接球閥 | 5 Quick Plug Equal Tee | 快插組合等徑三通 |
| 2 Flanged Connector | 法蘭片 | 6 Flexible Hose | 彈性耐壓管 | 6 Aluminum Quick Drop | 支管快接頭 | 6 Thread Quick Plug Ball Valve | 快插組合螺紋球閥 |
| 3 Quick Connect | 快速連接螺閘 | 7 Quick Drop | 支管快接頭 | 7 Quick Drop | 支管快接頭 | 7 Quick Plug Equal Tee | 快插組合等徑三通 |

Product Range & Features

產品範圍和特性



- Up to max.200mm diameter - 200m³/min flow single line.
- High-quality powder coating and colors customization.
- Designed for compressed air, vacuum, and inert gases.
- Light-weight & corrosion-free.
- 管徑最大200mm，最大流量200m³/min
- 高級粉體塗裝噴塗，耐久防腐，顏色可以定制
- 適用於所有噴油或無油壓縮空氣及惰性氣體
- 重量輕，防火UL90，可全天候室外安裝

- Quick connection.
- Available for BSP/NPT thread, flange, plug-in connection type.
- High-flow design ensures optimal performance.
- 一體式快接口，快速匹配管接頭
- 可選BSP或NPT標準螺紋，包括所有相關配件
- 高流速內徑設計耐久防腐

Pipe Connectors 快速管接頭



Flexible Hoses 彈性耐壓管



BLUE ALUMINUM PIPE 藍色鋁管				GRAY ALUMINUM PIPE 灰色鋁管				EQUAL TEE 等徑三通	
DN	OD	ID	Length	DN	OD	ID	Length	AIrpipe	DN
20	20.1	17.5	2.9M	20	20.1	17.5	2.9M	302 02 0100 01	20
25	25.1	22.5	2.9M	25	25.1	22.5	2.9M	302 02 0200 01	25
40	40.1	36.5	2.9M	40	40.1	36.5	2.9M	302 02 0400 01	40
50	50.1	45.7	2.9M	50	50.1	45.7	2.9M	302 02 0500 01	50
63	67.8	63.0	2.9M	63	67.8	63.0	2.9M	302 02 0601 05	63
80	84.8	80.0	2.9M	80	84.8	80.0	2.9M	302 02 0701 08	80
100	101.8	96.8	2.9M	100	101.8	96.8	2.9M	302 02 0801 08	100
150	153.0	147.5	2.9M	150	153.0	147.5	2.9M	302 02 1001 05	150
200	205.0	197.8	2.9M	200	205.0	197.8	2.9M	302 02 1101 05	200

*2.9M length please contact local sales.

GREEN ALUMINUM PIPE 綠色鋁管				END CAP 堵頭	
DN	OD	ID	Length	AIrpipe	DN
20	20.1	17.5	5.8M	302 08 0100 02	20
25	25.1	22.5	5.8M	302 08 0200 02	25
40	40.1	36.5	5.8M	302 08 0400 02	40
50	50.1	45.7	5.8M	302 08 0500 02	50
63	67.8	63.0	5.8M	302 08 0600 01	63
80	84.8	80.0	5.8M	302 08 0700 01	80
100	101.8	96.8	5.8M	302 08 0800 01	100
150	153.0	147.5	5.8M	302 08 0900 01	150

*2.9M length please contact local sales.

REDUCING PIPE TO FIT CONNECTOR 異徑管對管	
AIrpipe	DN
302 05 0100 02	20
302 05 0200 02	25
302 05 0400 02	40
302 05 0500 02	50
*Union connectors included	
302 05 0600 01	63
302 05 0700 01	80
302 05 0800 01	100
302 05 1000 01	150
302 05 1100 01	200
*Use three union connectors	



FIXTURE CLAMPS & ACCESSORIES
管夾



THREADED ADAPTORS
轉接頭



ATMOLYSIS BAG
分子篩





DRILL (TAPPER)
鑽頭



DRILL HOLDER
鑽頭夾具



MARKER
劃線器



HOLE DEBURRER
去毛刺器



ALUMINUM PIPE DEBURRER
鋁管去毛刺器



SPANNERS
水泵鉗



ALUMINUM PIPE CUTTER
鋁管切割器



ELECTRIC PIPE CUTTER
電動鋁管切割機



FIXING BOLTS
螺栓



SQUARE PIPE CUTTER
方管

ADJUSTABLE BRACKET
可伸縮支架



GRIDER CLAMP
老虎鉗



SQUARE STEEL CLAMP
壓板



PIPE BENDING
彎管器



WALL MOUNTED BRACKET
懸臂支架



UNIVERSAL BEAM SUSPENDER
外向抱箍吊扣



FIXTURE CLAMPS & ACCESSORIES
萬向抱箍



WIRE SUSPENSION CABLE
鋼絲繩



PIPE BENDING MACHINE
彎管機



CLAMP SPACER
管夾墊



VORTEX FLOW METER
渦街流量計



PRESSURE METER
氣體壓力錶



Superior Reliability!

最佳可靠性

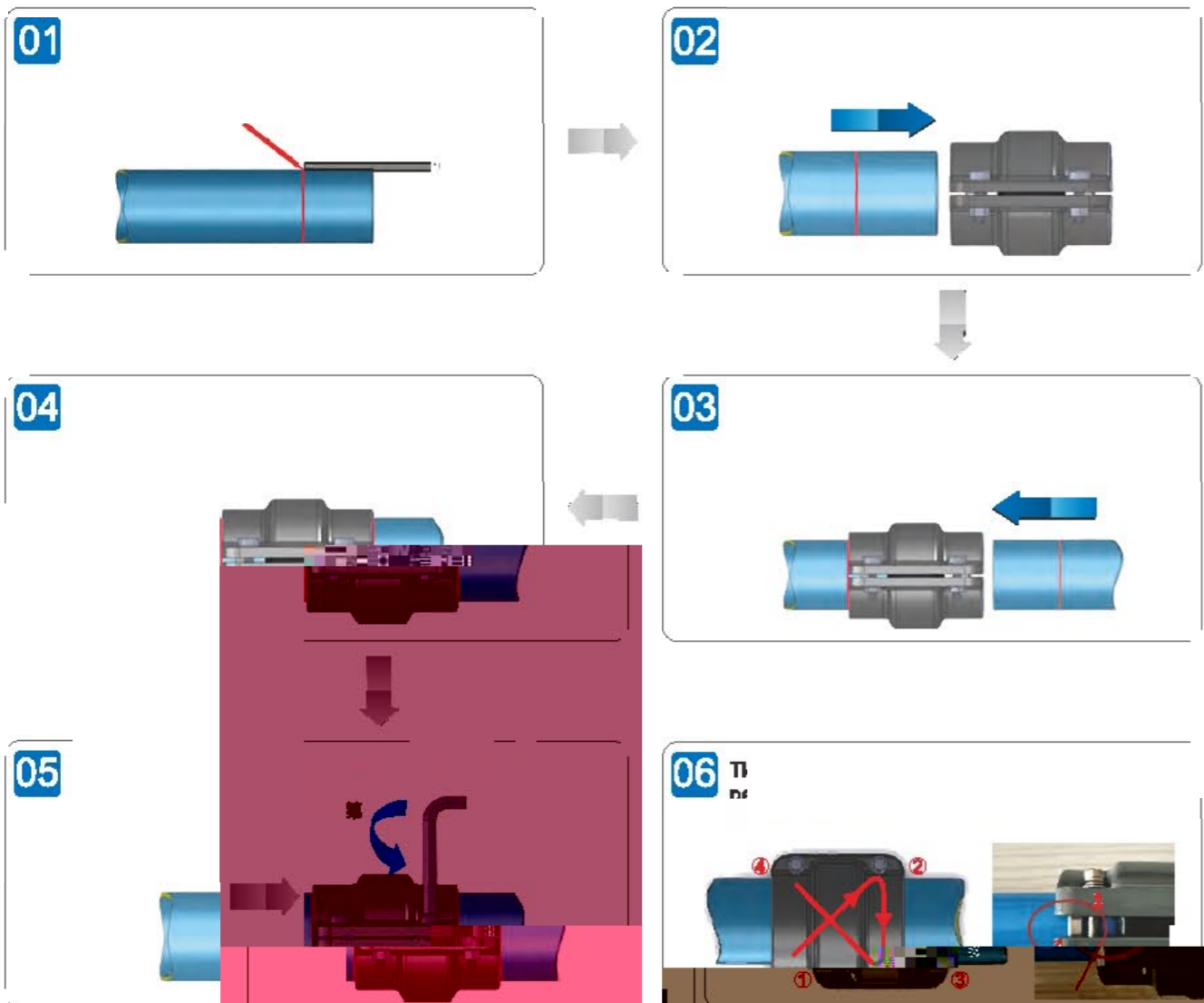


Insertion Depth S For DN20-DN50 Connector
DN20-DN50 (3/4" - 2") 管路安裝插入深度S

DN	Insertion depth S (mm)	插入深度S (mm)
50		39

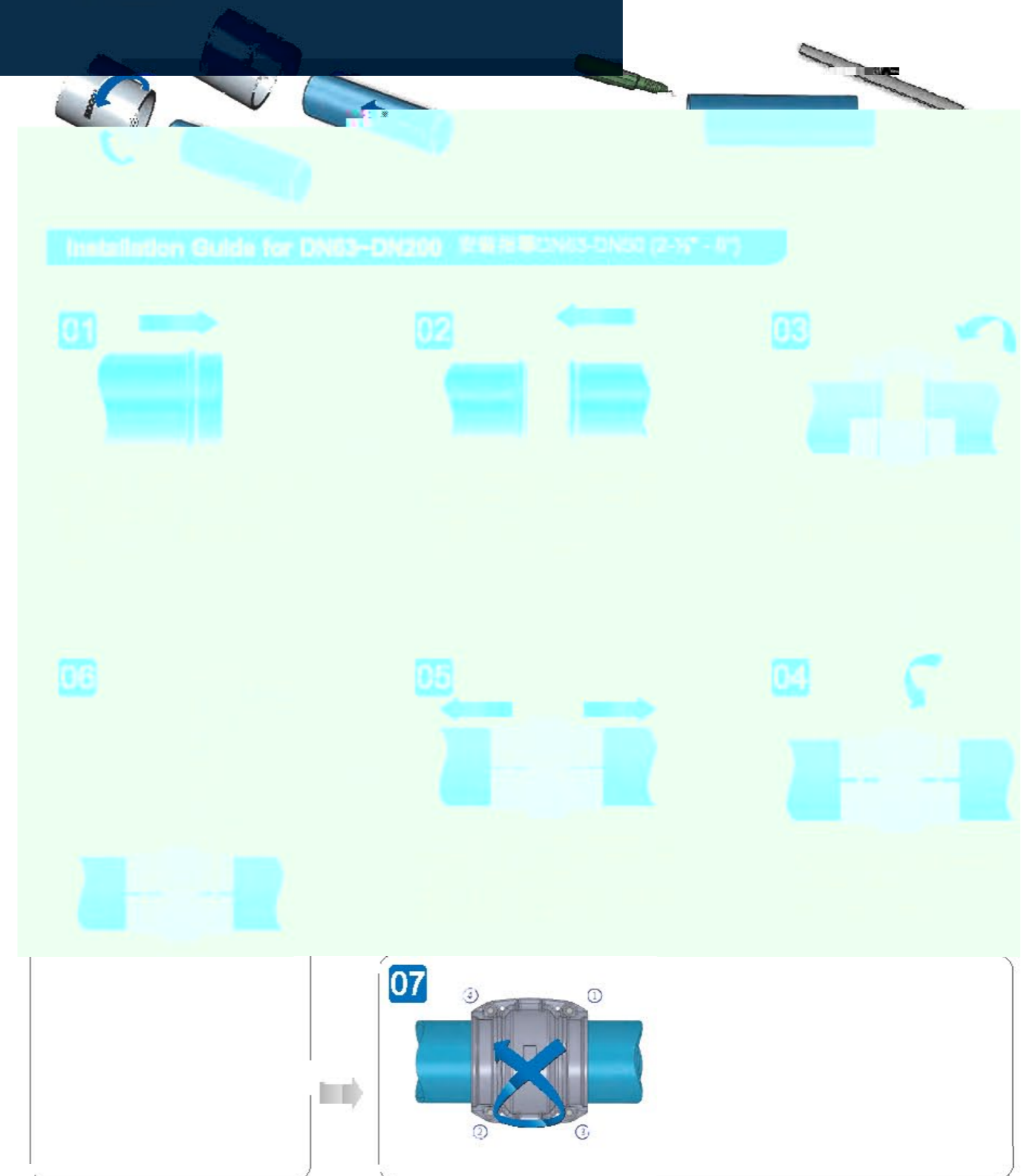
•	•
•	•

Installation Guide for DN20-DN50 安裝指導DN20-DN50 (3/4" - 2")

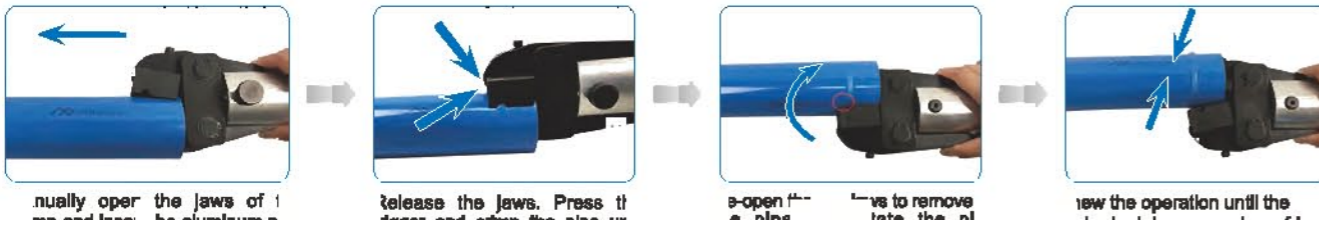


Deburr & Chamfer The Outer and Inner Edges Before Installation 安裝前去除管端切口內外的毛邊

-
-



Hand-held hydraulic lugging machine operation requirements 手持液壓凸管器作業要求



Numbers of lugs for each diameter: 各規格凸管數

AIRPIPE DN83 DN90 DN100 DN150 DN200

Note: Do not overlap the lugs

DN	H(mm)
83	

(Min.) (Max.)

Sizing Chart for Quick Drops 快換尺寸表

Dr 鑽頭	Dr 1/2 鑽頭	DN(MM)	Quick Drops (PN)	快換 (PN)
301 35 0005 01	301 35 0005 01			

11 35 0005 02 301 35 0006 05 061 302 10 1004 01 302 10 1005 01 302 10 1104 01 302 10 1106 01

Flow 管流速度 N m ³ /h	50M	100M	150M	200M	300M	500M	750M	1000M	1500M	2000M
20										
30										
40										
50										
60										
70										
80										
90										
100										
120										
150										
180										
200										
250										
300										
350										
400										
450										
500										
550										
600										
650										
700										
750										
800										
850										
900										
950										
1000										
1100										
1200										
1300										
1400										
1500										
1600										
1700										
1800										
1900										
2000										

Technical Specifications 工況範圍

- 適用
- 適用
- 適用
- 適用

Qualification & Standards 符合規範和標準



Engineered for Superior Performance 產品設計，只為最佳效能



we are at your **SERVICE**
我們始終在您的身邊

